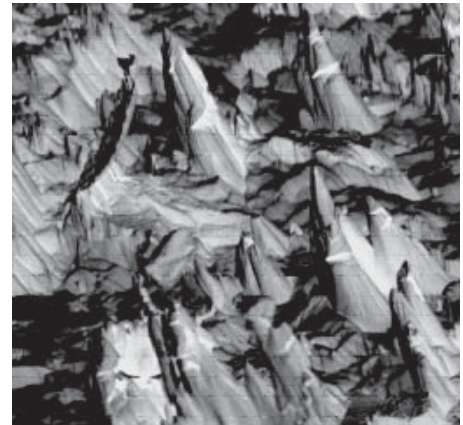


PC Upgrade Package for Scanning Auger Systems



SED digital photo acquired with ScanMap1

Description

RBD Instruments' ScanMap1 PC upgrade package is available for your PHI 545, 550, 560, 570, 590, and 610 Systems. This innovative new upgrade will enhance your system with a state-of-the-art PCI interface that provides all necessary system hardware control with the above pictured components and RBD Software. This upgrade allows Windows® 98, 2000 or XP control of system acquisitions and data massage. The ScanMap1 hardware and software are powerful, versatile, and easy to use.

PHI® Scanning Auger Systems Supported Include:

545
550
560
570
590
600
610

*PHI is a registered trademark of Physical Electronics

Advantages

- ◆ Runs on Windows 98, 2000 or XP
- ◆ Obsolete units are removed from the system
- ◆ System reliability is greatly improved
- ◆ Versatile RBD software is powerful, straight forward and user-friendly
- ◆ Easy to incorporate data into reports and publications
- ◆ Dramatically improved output – virtually any printer is supported
- ◆ Data can be sent over the Web
- ◆ An exceptional value – a fraction of what other upgrades cost

ScanMap1 - PC Upgrade Package for Auger Systems

Specifications

PC Requirement	Minimum requirement is Windows 95
<u>147 Specifications</u>	
Interface type	PCI 2.1 Compliant
Input Power requirements	90-264VAC, 47-66Hz single phase
Power Supply	+/- 12 Volts DC, +5 Volts DC
DR11 Output Ports	3
DR11 Input Ports	1
Digital to Analog Converters	2 (16 bit)
TTL Outputs.....	8
TTL Inputs	8
TTL Counter/Timer Inputs.....	12
ECL Counter/Timer Inputs.....	4
Operating Temperature Range	0° to 50° C
Humidity:.....	20 to 70% non-condensing

ScanMap1 Upgrade Includes

- | | |
|---|--|
| <ul style="list-style-type: none"> ◆ RBD 147 System Interface Unit ◆ RBD 147 Cable Kit ◆ RBD Model 21V ◆ 20-070,20-070A,18-070,18-170 Modification Kit (Required if Model 110 is not needed) ◆ PCMap1 Interface Card | <ul style="list-style-type: none"> ◆ Model 110 & Model 110 Cable Kit (only for 590, 595, and 600 systems) ◆ RBD AugerScan Software ◆ RBD AugerMap Software ◆ RBD 147 Software Driver ◆ ScanMap1 Installation Manual |
|---|--|

RBD ScanMap1 System Diagram

