

### Description

RBD Instruments' AugerMap 2 software enhances PHI® systems with state-of-the-art imaging and control. AugerMap 2 allows you to acquire high-resolution (up to 1024 x 1024) video and elemental images using an easy-to-use interface operating under Windows® 98, 2000, or XP. You can now produce photo-quality images from your PHI system, and easily integrate those images into your publications using standard formats. AugerMap 2 offers an enhanced project manager, advanced image manipulation, viewing of images during acquisition and improved control of 660 systems.

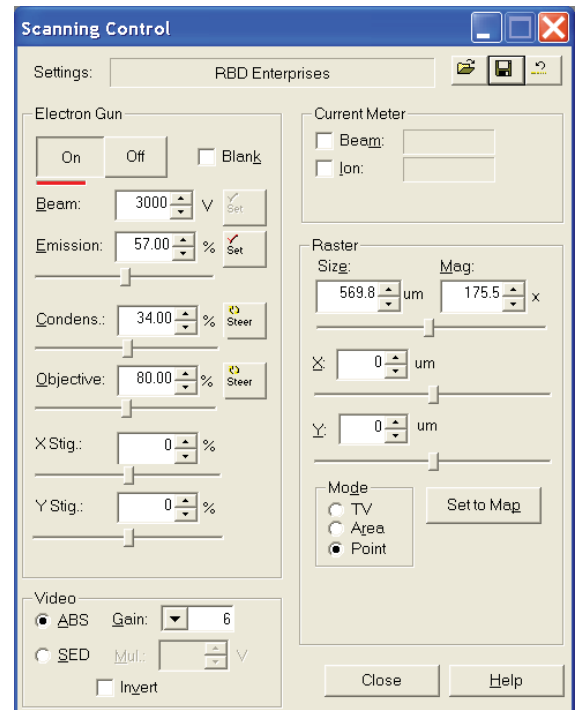
### PHI® Surface Analysis Systems Supported Include:

- ◆ Scanning Auger: 545, 590, 595, 600, 610, 660, 4100, 4300
- ◆ AES & XPS: 560, 570, 5500, 5600

*\*PHI is a registered trademark of Physical Electronics*

### Advantages

- ◆ Quickly renders high-contrast, high-resolution images
- ◆ Image formats compatible with all third-party imaging software
- ◆ Replaces antiquated photo scope, cameras, etc.
- ◆ Simple-to-use interface
- ◆ Scanning control tracks all settings for simple on/off procedure
- ◆ Real-time image display on your PC monitor (660 systems or PCMAPII with Direct Imaging Option)



# AugerMap Features & Specifications

## Superb Imaging

- Acquire maps at up to 1024x1024 resolution
- Journal-quality graphics
- Automatic quantization/threshold limits produce high-contrast images

## Advanced Features

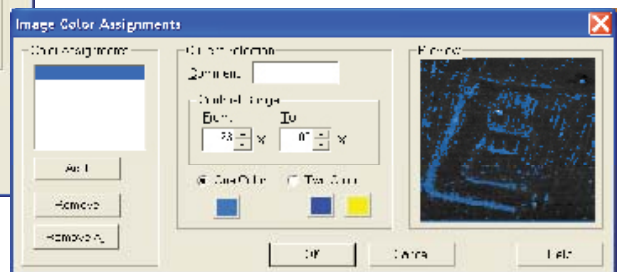
- ABS & SED video digital photos
- Real-time imaging on you PC with 660 systems or using a PCMAPII with the Direct Imaging Option
- Viewing of image maps during acquisition
- Image enhancements including noise reduction, sharpening, degrading, edge detection, contrast, gamma, and invert
- Image colorization, option for composite overlays
- Multiple point, line and area, acquisitions
- Integrated with AugerScan for point and area acquisitions
- Set acquisition parameters individually for each element
- Point and click control of map area size and position
- Zoom and Print Preview
- Redesigned scanning control dialog box
- Advanced project manager
- Micron markers
- Annotate images using any combination of fonts and colors

## Compatibility

- Images may be exported as bitmaps or copied to the clipboard for use in word processing, desktop publishing, or web authoring applications.



*Composite Image Editor*



*Color Assignment Editor*

